

HEALTH CARE SPANISH

Health Care Spanish Newsletter

August 2016



In This Issue

1. The Paranasal Sinuses
2. Symptoms of Sinusitis

Learning on the Go!

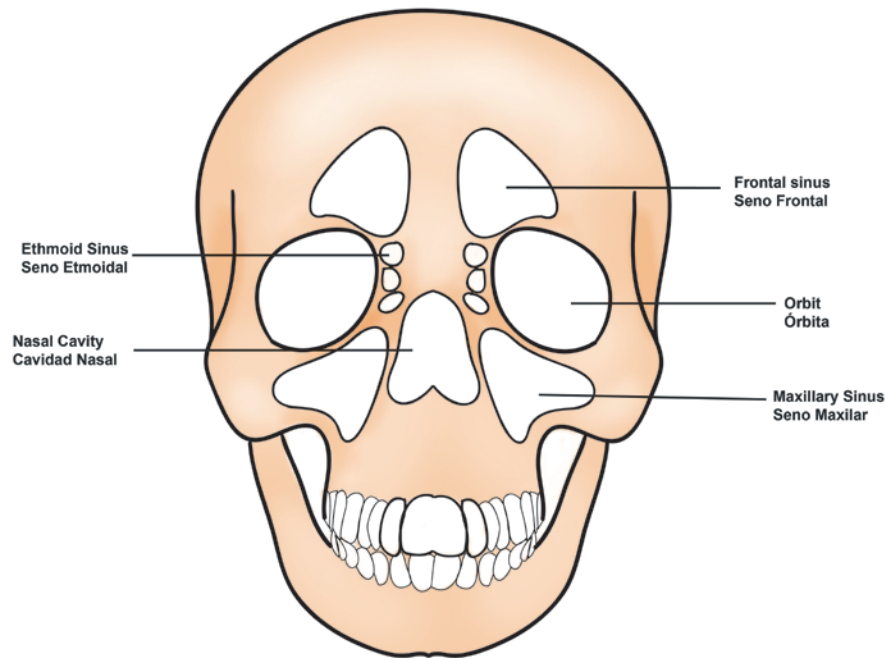
The goal of this newsletter is to provide you with enough information to be useful, but not more than can be learned within the busy schedule of a health care worker. You'll find anatomy charts, additional vocabulary, occasional feedback from subscribers, and more! Feel free to read them now and save them for later use such as with a patient or as a study guide for coursework.

Help Others by Providing Feedback

Part of Health Care Spanish's mission is to create a useful resource for health care workers. However, there is only so much that can be done without feedback from you. Email questions or suggestions to healthcarespanish@yahoo.com

Spread the Word

Do you know other health care workers or students who need to pick up a little Español? If you find our endeavor useful, we would be grateful if you share it with others.



**Fig. 1 Paranasal Sinuses
Senos Paranasales**

Los Senos paranasales son un grupo de cámaras que están alrededor de la cavidad nasal y en proximidad a la base del cráneo.

La Sinusitis es una inflamación de estas cámaras y es más comúnmente infecciosa, puede ser en su mayoría viral, bacteriana. Puede ser parte de un cuadro gripal y acompañarse de fiebre, malestar y escalofríos.

Los pacientes generalmente sienten una "pesadez" en la región de los senos paranasales, dolor de cabeza, y secreciones purulentas pueden presentarse y ser un signo de una infección bacteriana.

The Paranasal Sinuses are a group of chambers located around the nasal area and in the proximity of the skull base.

Sinusitis is an inflammation of these chambers and is commonly caused by viruses or bacteria, can be presented as part of a flu-like sickness and be accompanied by fever, malaise and chills.

Patients often feel dullness in the paranasal sinuses area, headache, purulent secretions can be presented and might be a sign of bacterial infection.

Sinusitis can be acute or chronic, if the symptoms persist for more than 12 weeks Sinusitis is classified as chronic; in this cases allergic Sinusitis and other respiratory conditions such as Asthma must be ruled out.

La Sinusitis puede ser aguda o cónica, si los síntomas persisten por mas de 12 semanas la Sinusitis se clasifica como crónica, en estos casos un cuadro de Sinusitis Alérgica y otras enfermedades respiratorias como el Asma, deben ser descartadas.



In children common symptoms are irritability, mouth breathing, fever, purulent nasal discharge and feeding difficulties.

En niños los síntomas mas comunes son, irritabilidad, respiración bucal, fiebre, descargas nasales purulentas y dificultades para la alimentación.

Contact Us

healthcarespanish@yahoo.com

Visit us on the web at www.healthcarespanish.com

Contribute

We always welcome input from our readers. If there's a particular anatomy chart or topic you think is important, let's work together to share it with the healthcare community.