

# HEALTH CARE SPANISH

Health Care Spanish Newsletter

October 21, 2015

## Learning on the Go!

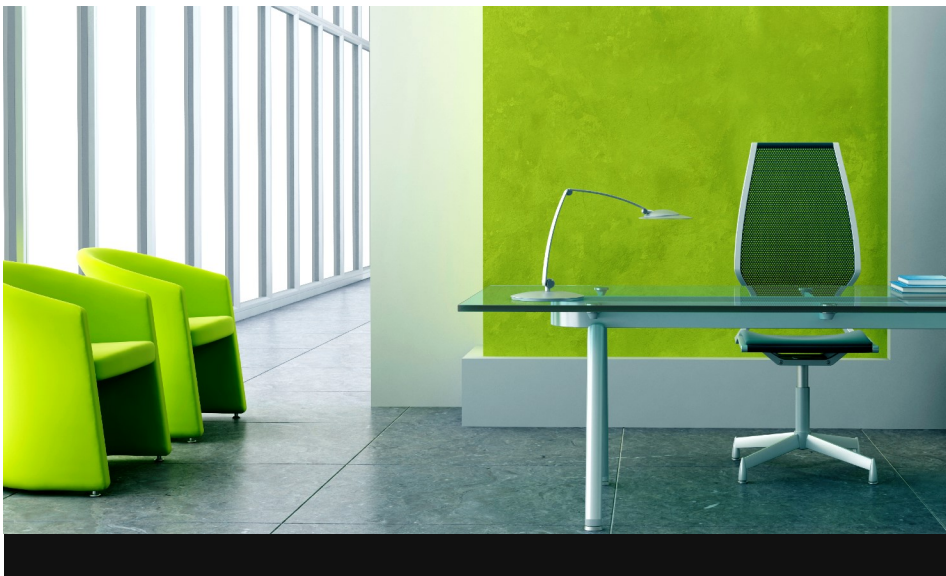
The goal of this newsletter is to provide you with enough information to be useful, but not more than can be learned within the busy schedule of a health care worker. You'll find anatomy charts, additional vocabulary, occasional feedback from subscribers, and more! Feel free to read them now and save them for later use such as with a patient or as a study guide for coursework.

## Help Others by Providing Feedback

Part of Health Care Spanish's mission is to create a useful resource for health care workers. However, there is only so much that can be done without feedback from you. Email questions or suggestions to [healthcarespanish@yahoo.com](mailto:healthcarespanish@yahoo.com)

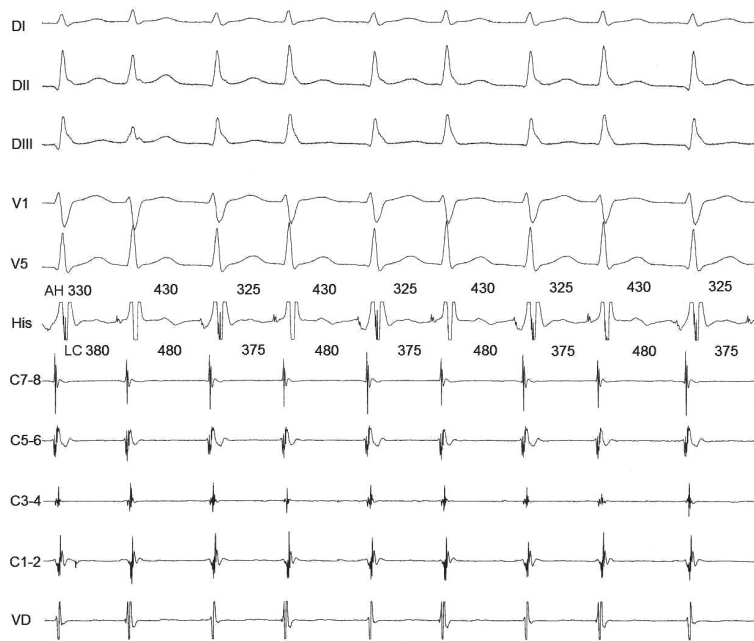
## Spread the Word

Do you know other health care workers or students who need to pick up a little Español? If you find our endeavor useful, we would be grateful if you share it with others.



## In This Issue

- Terms and chart related to Tachycardia



Various EKG Results

## Vocabulary

Tachycardia or Tachyarrhythmia Taquicardia o taquiarritmia

Supraventricular Tachyarrhythmia taquiarritmia supraventricular

Sinus arrhythmia arritmia sinusal

Atrial arrhythmia arritmia auricular

Junctional Arrhythmia or nodal Junctional arritmia o arritmia

Beats per Minute Latidos por minuto (LPM)

Pulse pulso

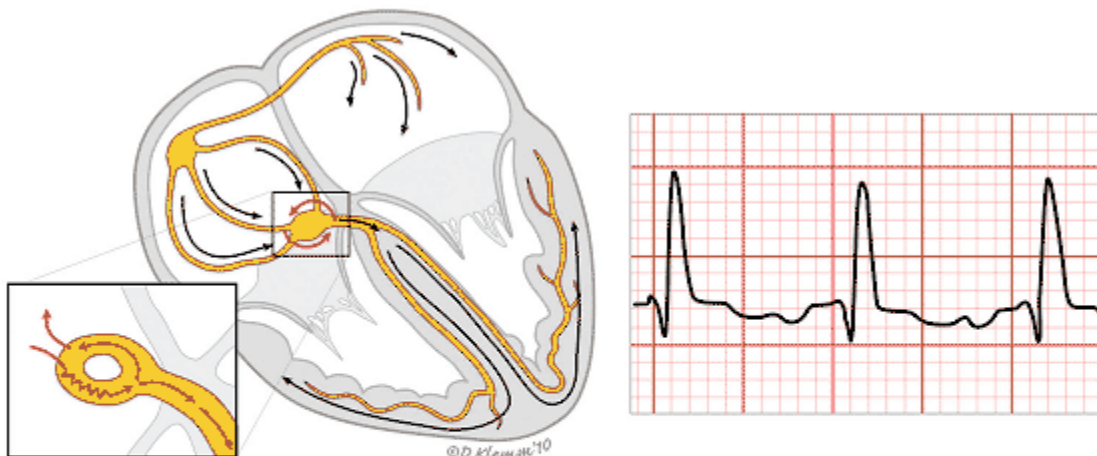
Ventricular Arrhythmia arritmia ventricular

Heart beat between 100 and 150 is called simple tachyarrhythmia Latido del corazón entre 100 y 150 LPM se llama sencilla taquiarritmia

Heart beat between 150 and 200 is called paroxysmal tachyarrhythmia Latido del corazón entre 150 y 200 LPM se llama taquiarritmia paroxística

Heart beat between 250 and 350 is called flutter (Atrial or Ventricular) Latido del corazón entre 250 y 350 LPM se llama aleteo (auricular o ventricular)

Heart beat over 350 is called fibrillation Latido del corazón más de 350 LPM se llama fibrilación



### Taquicardia por reentrada nodal

En taquicardia por reentrada nodal típica (conducción anterógrada por la vía AV lenta y conducción retrógrada por la vía rápida), la onda P puede no verse y puede ser visible justo después del complejo QRS y parecer una pseudo R en derivación V1.

### Nodal Reentry Tachycardia—Taquicardia por Reentrada Nodal

#### English Description

In typical nodal reentry tachycardia pro (slow antegrade and retrograde conduction via AV conduction through the fast track), the P wave is not visible and can be visible right after the QRS complex and look like a pseudo R in lead V1.

#### Descripción español

En taquicardia pro reentrada nodal típica (conduccion anterograda por la via AV lenta y conduccion retrograda por la via rapida), la onda P puede no verse y puede ser visible justo despues del complejo QRS y parecer una pseudo R en derivacion V1.

# More to Come!

- Translation of terms related to bradycardia

## Contact Us

[healthcarespanish@yahoo.com](mailto:healthcarespanish@yahoo.com)

Visit us on the web at  
[www.healthcarespanish.com](http://www.healthcarespanish.com)